



VISLINK

At the heart of the action.



IQ Sports Producer Datasheet

IQ Sports Producer

Create live professional sports productions without onsite camera team

IQ-Sports Producer (IQ-SP) is a leading AI system that automates a televised professional sports production but without the need of a camera team or director. Ideal for sports games that don't have the capital and production resource of the major leagues, it is ideal for tier 2 leagues, sports rights holders, colleges and schools as well niche sports events. It can be utilized by major clubs for training sessions, U21, U18 and other grass roots games where budget constraints prevents a full on-site production and outside broadcast team.

At the heart of the system is the IQ Artificial Intelligence (AI) engine that can follow the action either outside on the pitch, or indoors on the court. IQ-SP can be used remotely to live stream and record games and includes many features that you would expect for a compelling viewing in a professional match including score board, time, highlight detection and replays. At the end of the game, IQ-SP has the ability to automatically create an edit of the highlights as a summary of the match.

From live streaming on social media to live playout at a traditional broadcaster, IQ-SP can be acquired with an array of options for a variety of budgets. From high schools to major production companies and national broadcasters, IQ-SP can reliably create multiple live streams with compelling content that can be used by online platforms with IP workflows, or for high quality productions by traditional national broadcasters needing HD-SDI workflows.

Sports supported

Ball games: mix of indoor and outdoor including soccer, football, rugby, basketball, handball, ice hockey, futsal, netball, hockey.

More sports are currently in training.

Other sports: horse racing, jumping, dressage, cycling (velodrome).

Features

- Main camera: 2 or 4 x 4K cameras stitched and de-warped (All field-of-play is captured and recorded)
- Camera choice: Panoramic - 30 fps webstream, 60 fps broadcast/webstream
Side cameras - 60 fps single cameras (multiple per pitch)
- Playout: Social media / CDN (Cloud, RTSP, RTMP), HD-SDI (Decoder required)
- Onsite setup: Template / 1 hour (once only per site) on local IQ-SP server
- Video streams: 5 (Primary AI stream + 4 manual defined streams) – live stream or new views recreated from recording
- Multiple streams: AI can create multiple streams of action, broadcast, tactical, panoramic and defined views
- Scoreboard: Overlay (auto via OCR / manual via LinkMatrix portal)
- Time: Overlay (auto / manual)
- Graphics: Static and HTML
- Storyboard template for match:
 - Team logo's, team names
 - Content to play at the start, during halftime and end of the match, pre-roll / post-roll configuration
- Remote Management: LinkMatrix — including Clipper, Calendar (scheduler), multiple destination selection, score board, highlight detection & replay
- Social Media: Cloud decoding Facebook and YouTube and other OTT platforms



VISLINK

E: sales@vislink.com

T: +1 908 852 3700 / + 44 1442 431300

Learn more at www.vislink.com

LinkMatrix Management

Cloud based portal for complete remote management. Includes Clipper for social media postings, scheduler, overlay control, destination selection, scoreboard control, highlight creation & replay, social media decoding and streaming.

Analysis Integration Layer

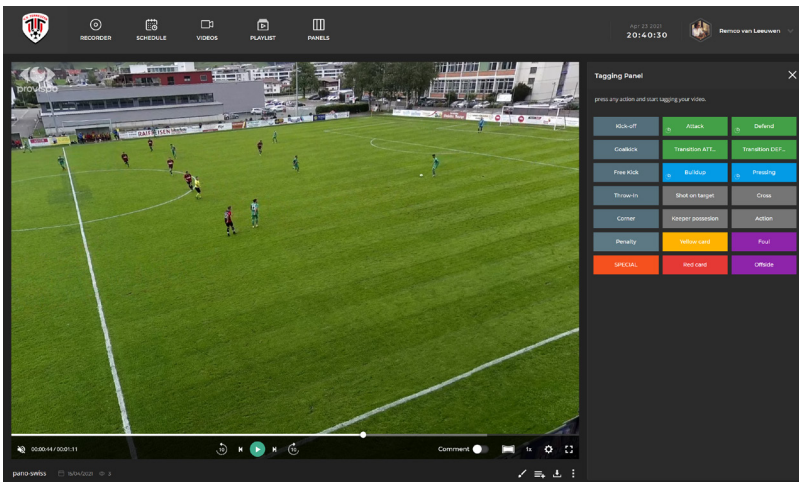
IQ-SP can simultaneously produce a broadcast view for live-streaming and a tactical view that can be used for an array of sports analytical packages.

IQ-SP has a close integration with Provispo that manages, and consults on analysis including a range of well known third-party analytical packages, with an online video storage platform. Upload of a video is an automatic process making content immediately available locally for analysis by coaches and trainers on their mobile devices.

- Broadcast: Support for HD-SDI playout workflows
- Recording: Locally or in cloud
- Support: 24x7
- Data: Geospatial export for 3rd party training tools
- Analysis: Integration with analysis packages for trainers

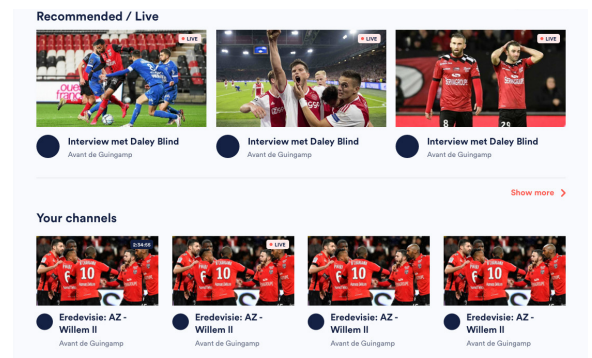
Specifications

- **IQ-SP Server:** 19" x 2U -100GigE (Main)
IQ-SP Server: Standalone server (Club)
- **Server Video Output:** Up to 20Mb/Sec (5 streams) – decoder required (cloud/on-premise)
- **Server Power:** 100 – 240V
- **Audio options:**
Microphone: audio array or stereo mini-jack
Basic 4x4K: default single channel input
- **Installation of camera:**
Basic 4x4K: 8 - 10m high, 0-15m
IQ-xCam: 8m-10m high, 0-50m from pitch (AI zoom function)



IQ-YOURTEAMSTREAM

Looking to monetise content? IQ-SP does not claim any media rights on content. Organizations are free to distribute and display as they choose. However, the option of IQ-YOURTEAMSTREAM offers the opportunity for organizations to create their own OTT platform for playout and charge a subscription. Please contact IQ-VS for more information.



VISLINK

E: sales@vislink.com

T: +1 908 852 3700 / + 44 1442 431300

Learn more at www.vislink.com

Playout

Every IQ-SP system needs a playout server as part of the workflow to create IP or SDI streams complete with graphical overlays. There is a choice of two Playout options:

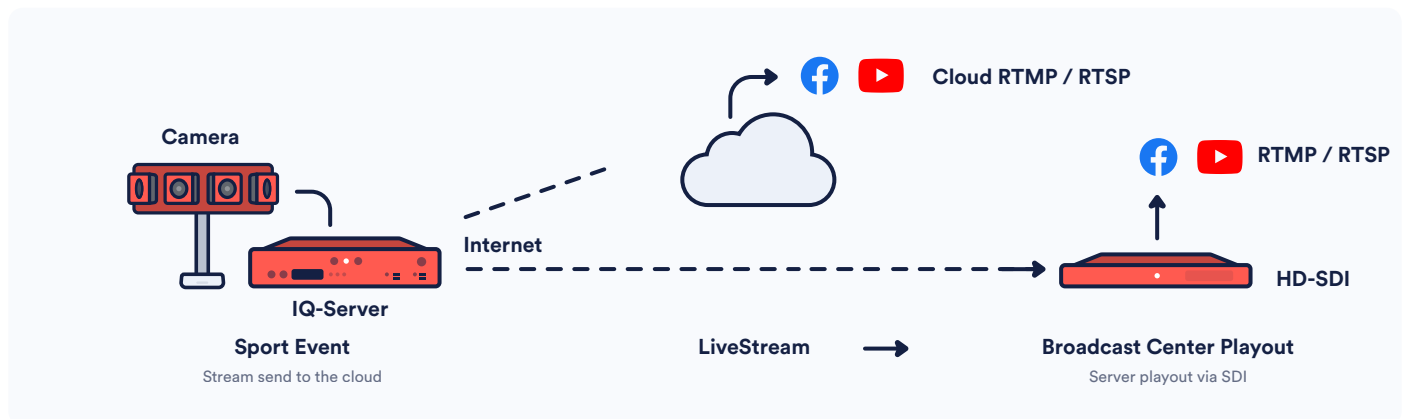
Cloud based (Subscription based)

Cloud based decoder that can push steam to social media, CDN's, OTT platform or YourTeam-Stream

Decoder (on-site)

WMT 2K4: 4x IP/HD-SDI outputs

IQ-SP Platform Workflow broadcast



Camera options

The camera option depends on the field of view and budget of the project. IQ-SP supports 5 different camera types:



IQ-xCam 4x 4K (60fps)
Broadcast solution (SDI)



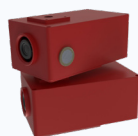
IQ-xCam 2x 4K (60fps)
Broadcast solution (SDI)



IQ-xCam 1x 4K (60fps)
Broadcast solution (Side camera)



Basic 4x 4K (30fps)
Webstreaming solution (choice of cameras)



2x 4K (60fps)
Webstreaming solution (choice of cameras)



	Club	Pro/Pro+	Premium
	Ideal for grass root clubs and analytical packages live stream to social media	Full broadcast capability with Pro+. Ideal for indoor courts/ smaller field for full broadcast quality	Full broadcast capabilities & high quality. Ideal for all sports. Scalable to include side cameras
Camera	Basic 4x4K	Choice of cameras / IQ-xCam (2c)	IQ-xCam (4c)
IQSP Server (included)	19" Lite Server	19" 2U Pro Server	19" 2U Premium Server
Multicamera streams	1 (Only AI)	Up to 5	Up to 5
Multicamera operation with side cams	✗	✗	✓
Manual camera control and tracking	✗	✓	✓
Views available	Tactical only	Tactical/Broadcast	Tactical/Broadcast
Panoramic view	✓	✓	✓
Stitching, Image correction and de-warping	✓	✓	✓
Automated director (AI)	✓	✓	✓
Livestreaming to other outputs	1 Channel	Multiple	Multiple
Remote management and control	✓	✓	✓
Sports supported	1 per system	Unlimited	Unlimited
Cloud live streaming (subscription)	✓	✓	✓
Recording	Local 128GB	Local & Cloud 128GB	Local & Cloud 128GB
IQ Calendar (Online Event Scheduler)	✓	✓	✓



IQSP Packages Depending on budget and requirements

IQ Sports Producer Datasheet

	Club	Pro/Pro+	Premium
Media assets (pre-roll, post-roll etc)	✗	✓	✓
Commentary	✗	✗	✓
Clipper manual	✓	✓	✓
Clipper automated	✗	✓	✓
Scoreboard manual	✓	✓	✓
Scoreboard automated	✗	✓	✓
Highlights manual	✓	✓	✓
Highlights automated	✗	✓	✓

Please contact us on info@IQVideoSolutions.com for more information, or visit our website at iqvideosolutions.com.



VISLINK

E: sales@vislink.com

T: +1 908 852 3700 / + 44 1442 431300

Learn more at www.vislink.com