



# VISLINK

At the heart of the action.



LinkMatrix Datasheet

## MVP LinkMatrix

### Management portal for Encoders, Decoders and IQ-SP

Webbased

Hosted Cloud Service

Remote Operation Management

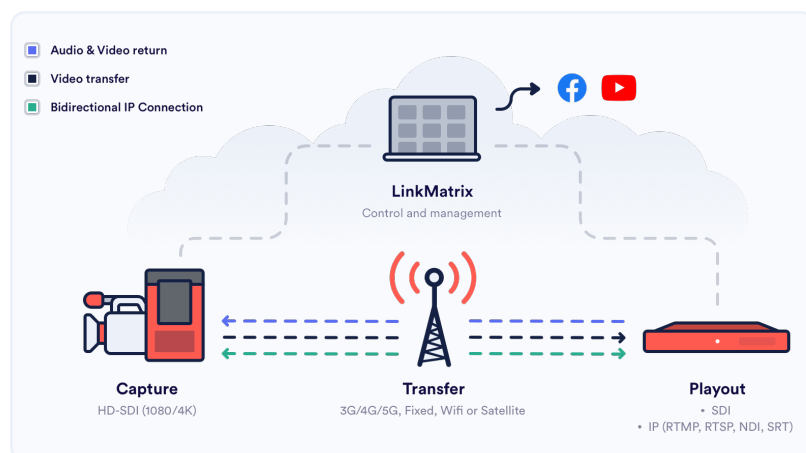
REMI Support

### Overview:

- Allows remote operation of WMT encoders, decoders and IQ-SP
- Hosted Cloud Service
- Operates under most browsers
- Manage, configure, operate, monitor and trouble shoot
- Intuitive and easy to use GUI
- Operate live stream from anywhere in the world
- REMI features including Tally, PreSonus and RCP control
- Full network management including cellular, wi-fi, satellite & LAN
- IQ-SP (AI Sports Production) Remote Management

LinkMatrix is a free-to-use management platform that operates from a browser on any device for managing WMT products remotely. This means non-technical presenters and production people in the field do not need to manage the units directly.

### WMT Products - Positioning



### Features

- Free hosted service
- Secure sign on with defined user privileges
- Use on any browser supported device from any remote location
- Manage and control WMT encoders
- Manage and control IQ-SP
- Universal playout of 3rd party encoders
- View thumbnails of live streams with video formats/frame rates
- Connect live streams to a live stream destination (decoder or online destination)
- Manage decoder hardware
- Create social media streams
- Configure, operate & troubleshoot
- View and control cellular and fixed networks
- Cloud decoding for IP workflows
- Control Transcoding functions
- Control IFB & Video Return
- Create graphical overlays
- Edit live streams into clips (clipper)
- Remote video switching
- REMI - Remote tally/RCP
- Scheduling live events
- Stat generation and live gauges



VISLINK

E: [sales@vislink.com](mailto:sales@vislink.com)

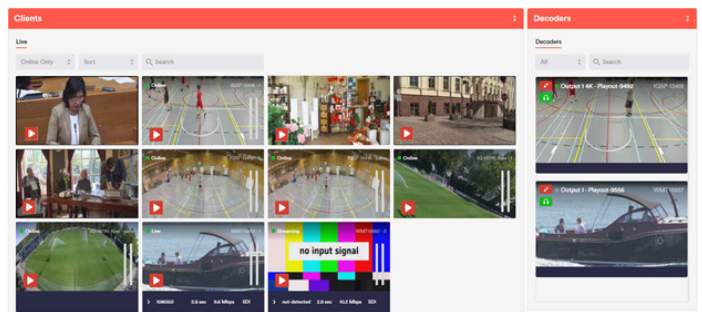
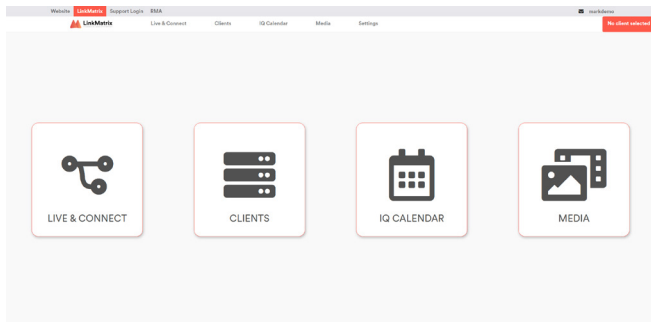
T: +1 908 852 3700 / + 44 1442 431300

Learn more at [www.vislink.com](http://www.vislink.com)

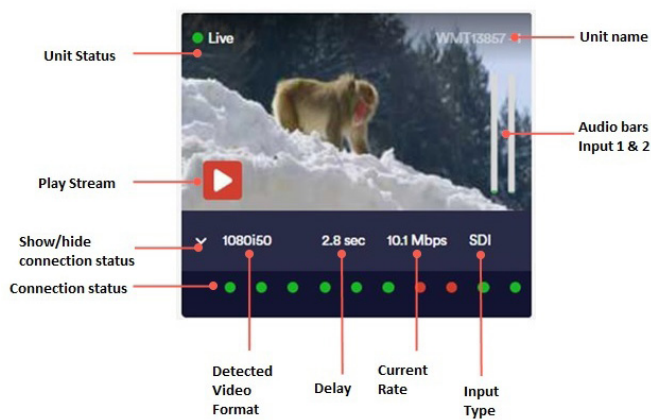
## Live & Connect

## LinkMatrix Datasheet

The Live & Connect page of LinkMatrix is where you can connect, control and monitor all video streams. The left side of the screen shows all the different streams available in an account, the right side of the screen contains all your output destinations where a simple drag and drop connects encoders with their appropriate decoder.



## Universal Playback



LinkMatrix has a Universal Playback function. This allows the supports of many different video sources, even third party streams and competitive offerings that can be added and connected to the decoder outputs or pushed to the inbuilt social media streaming feature.

The Universal Playback feature supports third party streams of RTMP (H.264), RTSP (H.264 & H.265), TSMEPEG4, and HLS. Third party streams are called StreamSources in LinkMatrix.

It is possible to take remote control of WMT encoders and control them by displaying an emulation of the touchscreen of the graphical user interface but within a browser. Any configuration and operation of the device can be done remotely including going live. Camera people, presenters and journalists on location do not have to be technical to use the encoder and all operation can be done remotely in real time.

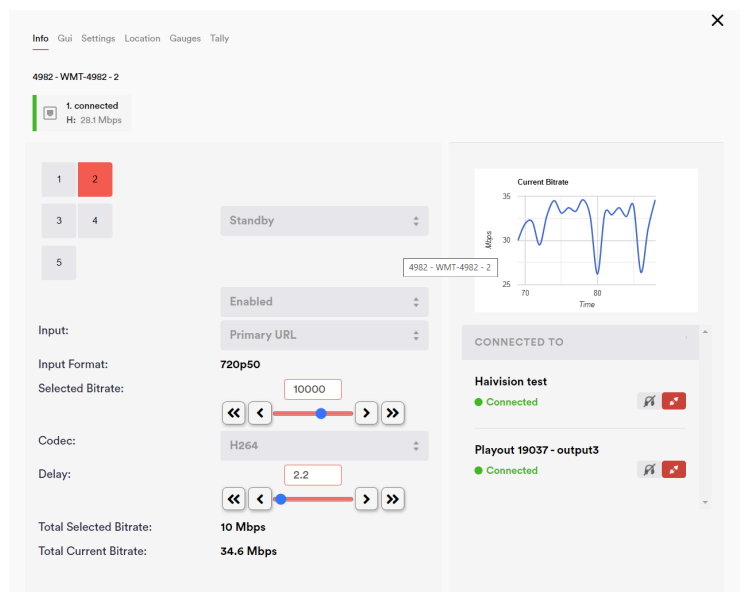
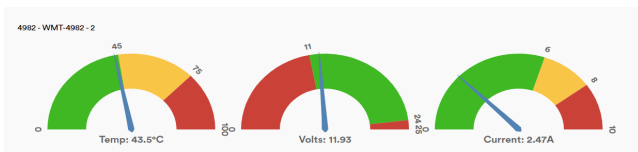
## Management & Monitoring

LinkMatrix has a host of configuration and operational statistics for viewing and troubleshooting including cellular and network connectivity.

LinkMatrix can determine which decoder destination and decide which physical output on the decoder device to live stream to.

LinkMatrix also supports full cloud decoding (as a subscription) and can transcode to a variety of different video formats and stream to a different range of social media, CDN, OTT or other IP video platforms.

The Gauges tab show gauges detailing the detected temperature, voltage and current of the unit.



VISLINK

E: [sales@vislink.com](mailto:sales@vislink.com)

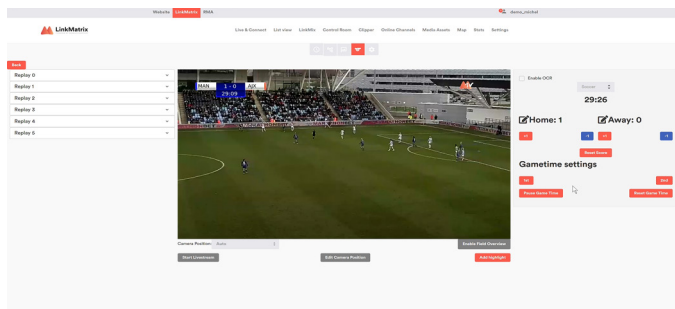
T: +1 908 852 3700 / + 44 1442 431300

Learn more at [www.vislink.com](http://www.vislink.com)

## IQ-Sports Producer

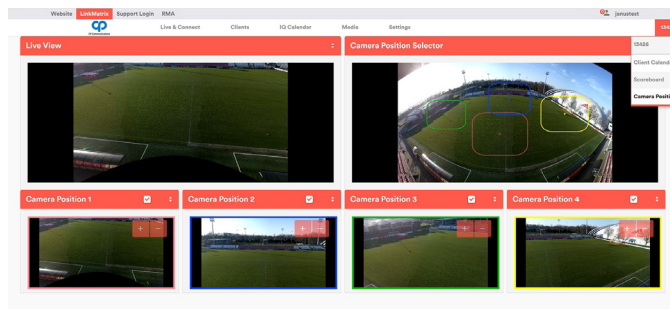
LinkMatrix is also the central management system for IQ-SP, the AI driven sports production platform from IQ Video Solutions. It allows games to be scheduled, graphical overlays to be added, scoreboard configuration, creation and playout of highlights, commentary, storyboard creation including intro's and outro's, creation of additional streams with zoomed in views of the pitch, clipping of live streams for short MP4 highlights for social media, MP4 creation for training applications, and the addition of sponsorship banners as overlays on pitch-side advertisement hoardings.

By the end of 2020: LinkMatrix also allows the ability to add remote commentary.



### Features:

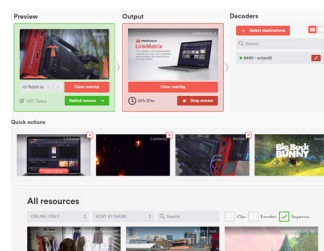
- Calendar for scheduling games
- Create highlights and replays
- Add Storyboard for intro's and outro's
- Graphical overlays
- Add sponsors and banners to matches
- Scoreboard (manual and OCR)
- Multiple view setup for multi-camera



## Other Management & Production Solutions within LinkMatrix

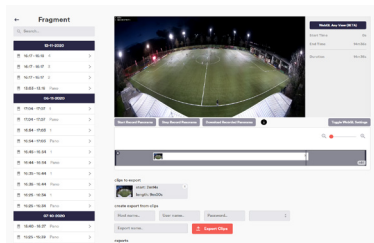
### LinkMix

Real time switching center and playout. LinkMix from MVP is a real-time playout and switching solution for use with the LinkMatrix video control and management center. It simplifies the ability to create complete IPTV channels featuring playlists, overlays, live switches and ticker tapes. These channels can then be published on platforms such as Vimeo and Facebook.



### Clipper

Clipper is a web-based live TV clipping application. With Clipper, content teams can select key moments as they occur from a live stream, edit and post them within 30 seconds on Social Media platforms or a private CDN.



### LinkSwitch

The LinkSwitch is the stand-alone debonding server offering transcoding and relay services. The LinkSwitch is required when customers want to operate at a larger scale or do not have requirements for decoding to SDI. The LinkSwitch is a highly scalable solution offering several options which are available in a buffet model.



### IFB App

The IFB app is the ultimate companion app for WMT users. It allows your entire crew to use their iOS device to listen in to the same IFB stream coming from the studio. No need for audio splitters and cumbersome cables, everyone uses their own device and can decide for themselves what they want to listen to.



**VISLINK**

E: [sales@vislink.com](mailto:sales@vislink.com)

T: +1 908 852 3700 / + 44 1442 431300

Learn more at [www.vislink.com](http://www.vislink.com)