

IQ Sports Producer

AI-driven Sports Production



IQ Sports Producer (IQ-SP) is a leading AI system that automates a televised professional sports production but without the need of a camera team or director. Ideal for sports games that don't have the capital and production resource of the major leagues, it is ideal for tier 2 leagues, sports rights holders, colleges and schools as well niche sports events. It can be utilized by major clubs for training sessions, U21, U18 and other grass roots games where budget constraints prevents a full on-site production and outside broadcast team.

At the heart of the system is the IQ Artificial Intelligence (AI) engine that can follow the action either outside on the pitch, or indoors on the court. IQ Sports Producer can be used remotely to live stream and record games and includes many features that you would expect for a compelling viewing in a professional match including score board, time, highlight detection and replays. At the end of the game, IQ-SP has the ability to automatically create an edit of the highlights as a summary of the match.

From live streaming on social media to live playout at a traditional broadcaster, IQ Sports Producer can be acquired with an array of options for a variety of budgets. From high schools to major production companies and national broadcasters, IQ Sports Producer can reliably create multiple live streams with compelling content that can be used by online platforms with IP workflows, or for high quality productions by traditional national broadcasters needing HD-SDI workflows.

Key Features

Main camera: 2 or 4 × 4K cameras stitched and de-warped (All field of play is captured and recorded)

Camera choice: Panoramic - 30fps webstream, 60 fps broadcast/webstream
Side cameras - 60 fps single cameras (multiple per pitch)

Playout: Social media / CDN (Cloud, RTSP, RTMP), HD-SDI (Decoder required)

Onsite setup: Template / 1 hour (once only per site) on local IQ-SP server

Video streams: 5 (Primary AI stream + 4 manually defined streams) – live stream or new views recreated from recording

Multiple streams: AI can create multiple streams of action, broadcast, tactical, panoramic and defined views

Scoreboard: Overlay (auto via OCR / manual via LinkMatrix portal)

Time: Overlay (auto / manual)

Graphics: Static and HTML

Storyboard template for match:

- Team logos and names
- Content to play at the start, during halftime and end of the match, pre-roll / post-roll configuration

Remote Management: LinkMatrix - including Clipper, Calendar (scheduler), multiple destination selection, score board, highlight detection & replay

Social Media: Cloud decoding Facebook and YouTube and other OTT platforms

Broadcast: Support for HD-SDI playout workflows

Recording: Locally or in cloud

Support: 24×7

Data: Geospatial export for 3rd party training tools

Analysis: Integration with analysis packages for trainers

Sports Supported

Ball games: mix of indoor and outdoor including soccer, football, rugby, basketball, handball, ice hockey, futsal, netball, hockey. Additional ball sports are currently in training.

Other sports: horse racing, jumping, dressage, cycling (velodrome).

LinkMatrix Management

Cloud-based portal for complete remote management. Includes Clipper for social media postings, scheduler, overlay control, destination selection, scoreboard control, highlight creation and replay, social media decoding and streaming.

Analysis Integration Layer

IQ Sports Producer can simultaneously produce a broadcast view for livestreaming and a tactical view that can be used for an array of sports analytical packages.

IQ Sports Producer has a close integration with Provispo that manages and consults on analysis including a range of well known third-party analytical packages, with an online video storage platform. Upload of a video is an automatic process, making content immediately available locally for analysis by coaches and trainers on their mobile devices.



IQ-YOURTEAMSTREAM

Looking to monetise your content? IQ Sports Producer does not claim any media rights on content, allowing organizations to freely distribute and display as they choose. In addition, the **IQ-YOURTEAMSTREAM** option offers the opportunity for organizations to create their own OTT platform for playout and charge a subscription. Please contact Vislink for more information.

Specifications

IQ-SP Server: 19" x 2U -100GigE (Main)

IQ-SP Server: Standalone server (Club)

Server Video Output: Up to 20Mb/Sec (5 streams) – decoder required (cloud/on-premise)

Server Power: 100 – 240V

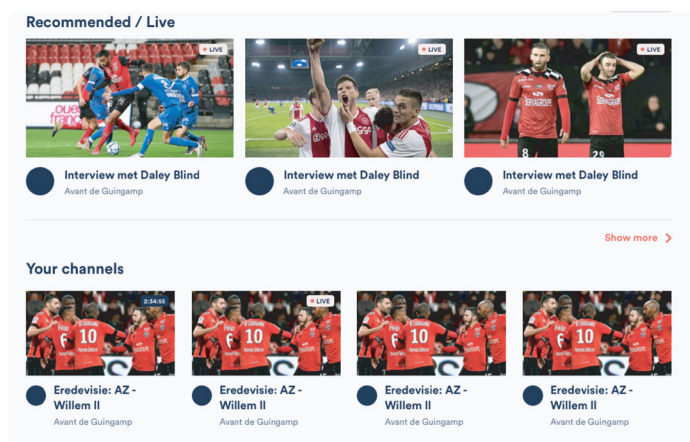
Audio options:

Microphone: audio array or stereo mini-jack
Basic 4x4K: default single channel input

Installation of camera:

Basic 4x4K: 8 - 10m high, 0-15m

IQ-xCam: 8m-10m high, 0-50m from pitch (AI zoom function)



Playout

Every IQ Sports Producer system requires a playout server as part of the workflow to create IP or SDI streams complete with graphical overlays.

There is a choice of two playout options:

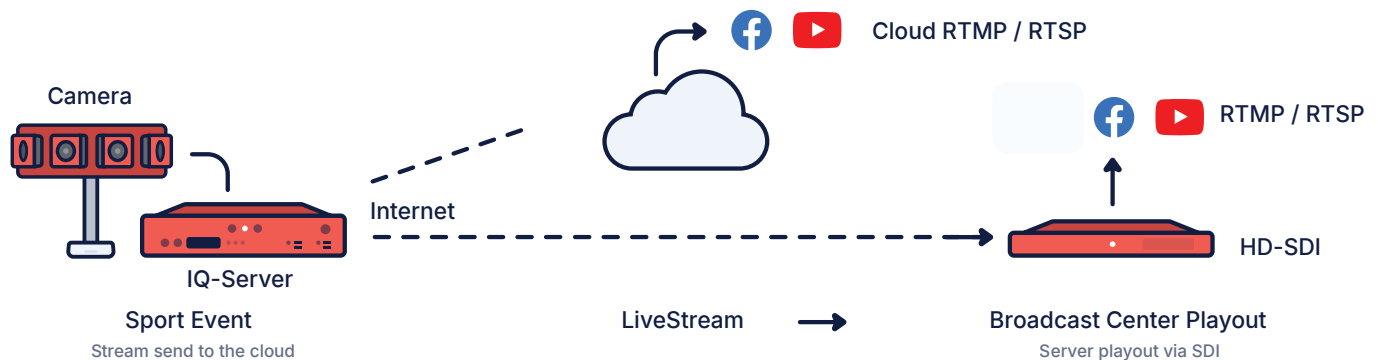
Cloud based (subscription)

Cloud based decoder that can distribute streams to social media, CDN's, OTT platform or IQ-YOURTEAMSTREAM.

Decoder (on-site)

WMT 2K4: 4x IP/HD-SDI outputs

IQ Sports Producer Platform Broadcast Workflow



Camera options

The camera option depends on the field of view and budget of the project. IQ-SP supports 5 different camera types:



IQ-xCam 4× 4K (60fps)
Broadcast solution (SDI)



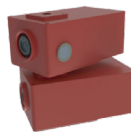
IQ-xCam 2× 4K (60fps)
Broadcast solution (SDI)



IQ-xCam 1× 4K (60fps)
Broadcast solution (Side camera)



Basic 4× 4K (30fps)
Webstreaming solution



2× 4K (60fps)
Webstreaming solution

IQSP Packages

Depending on budget and requirements

	Club Ideal for grassroots clubs and analytical packages for live streaming to social media.	Pro / Pro+ Full broadcast capability with Pro+. Ideal for indoor courts or smaller fields with full broadcast quality.	Premium Full broadcast capabilities & high quality. Ideal for all sports. Scalable to include side.
Camera	Basic 4x4K	Choice of cameras / IQ-xCam (2c)	IQ-xCam (4c)
IQSP Server (included)	19" Lite Server	19" 2U Pro Server	19" 2U Premium Server
Multicamera streams	1 (Only AI)	Up to 5	Up to 5
Multicamera operation with side cams	✗	✗	✓
Manual camera control and tracking	✗	✓	✓
Views available	Tactical only	Tactical/Broadcast	Tactical/Broadcast
Panoramic view	✓	✓	✓
Stitching, Image correction and de-warping	✓	✓	✓
Automated director (AI)	✓	✓	✓
Livestreaming to other outputs	1 Channel	Multiple	Multiple
Remote management and control	✓	✓	✓
Sports supported	1 per system	Unlimited	Unlimited
Cloud live streaming (subscription)	✓	✓	✓
Recording	Local 128GB	Local and Cloud 128GB	Local and Cloud 128GB
IQ Calendar (Online Event Scheduler)	✓	✓	✓
Media assets (pre-roll, post-roll etc)	✗	✓	✓
Commentary	✗	✗	✓
Clipper manual	✓	✓	✓
Clipper automated	✗	✓	✓
Scoreboard manual	✓	✓	✓
Scoreboard automated	✗	✓	✓
Highlights manual	✓	✓	✓
Highlights automated	✗	✓	✓