

# L3025

Small, Lightweight  
Down-Converter



The L3025 series Down-Converters are performance-optimized for the Vislink Quantum Receiver and ULRX-LD wireless camera demodulators and decoders. The Down-Converters are also suitable for third-party systems.

The L3025 series utilizes a very-high dynamic range for weak signal reception with co-located high-level signals. The front-end internal filter protects against damage and reduces overloading from other sources of UHF transmission, high-power transmitters and static discharge.

Each Down-Converter is small, lightweight, protected against water and dust ingress, and designed for outdoor installations, meeting the IP65 standard. An additional pole or rail mount bracket allows for ease and simple mounting. The L3025 takes power from the UHF output connector (usually from the Quantum Receiver or ULRX-LD wireless camera demodulators and decoders). A tricolor LED indicates unit status.

The unit has switchable low and high gain modes:

- In low gain mode, the Down-Converter provides sufficient gain to compensate for up to 20-30dB of cable loss between the Down-Converter and the receiver, giving up to approximately 100m (using good quality cable - such as Belden 1694A).
- In high gain mode, the distance can extend to approximately 150m.

## Key Features

Small, lightweight and fully protected against water and dust ingress (IP65)

Antennas (and Down-Converters) can be located up to 150m from demodulators and decoders

High dynamic range for weak signal reception with co-located high level signals

Tricolor LED indicates unit status and gain mode

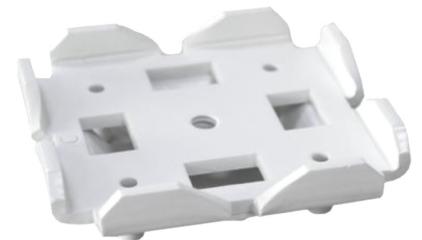
Includes State Pole Mount; additional L9972 Mounting Brackets enable simple rail and pole mounting

## Typical Applications

Event coverage

News Coverage

Sports Coverage



**L9972 Down-Converter Bracket**

# L3025 Datasheet



Technical Specifications	
General	
Antenna Input	50 $\Omega$ N-Type (F)
UHF Output	75 $\Omega$ BNC (F)
Noise Figure	<1.5dB
Phase Noise	-90dBc/Hz @ 10kHz offset Internal Band Pass Filter on RF
Spurious	<-60 dBm
O1P3	>26 dBm
OP1dB	>14 dBm
Image/Half-IF Rejection	>60 dBc
Status	Tricolor LED: GREEN – Low Gain Setting ORANGE – High Gain Setting RED – Unit Error
Compliance	CE: (EN302064, EN301489, ES202239) FCC: Static Discharge (IEC610004-2)
Environmental	Temperature: -10° C to +55°C IP65 (14° F to 122° F)
Power	2.5 to 24V DC via UHF output connector r

Model	Frequency	Gain Mode dB (typ.)		Physical (Excluding Bracket)	
		Normal dB	High dB	Dimensions (mm)	Weight (g)
L3025-1415	1.435-1.525 GHz	28	43	153 (H) x 65 (W) x 25 (D) (6" x 2.6" x 1")	250 g (0.56 lbs)
L3025-1718	1.785-1.805 GHz	30	45		
L3025-1927E	1.9-2.7 GHz	26	41		
L3025-2732	2.7-3.2 GHz	26	41		
L3025-3236	3.2-3.6 GHz	30	45		
L3025-3239E	3.2-3.9 GHz	30	41		
L3025-4450	4.4-5.0 GHz	24	39		
L3025-4854E	4.8-5.4 GHz	30	45		
L3025-5459	5.4-5.925 GHz	26	41		
L3025-6368	6.3-6.8 GHz	38	53	168 (H) x 65 (W) x 25 (D) (6.1" x 2.6" x 1")	300 g (0.66 lbs)
L3025-6469	6.425-6.960 GHz	38	53		
L3025-6471	6.424-7.125 GHz	38	53		
L3025-6875	6.80-7.5 GHz	38	53		
L3025-7074*	7.0-7.4 GHz	22	25		
L3025-7277	7.25-7.75 GHz	38	53		

**NOTE:** Other bands are available. Contact us with your requirements.

