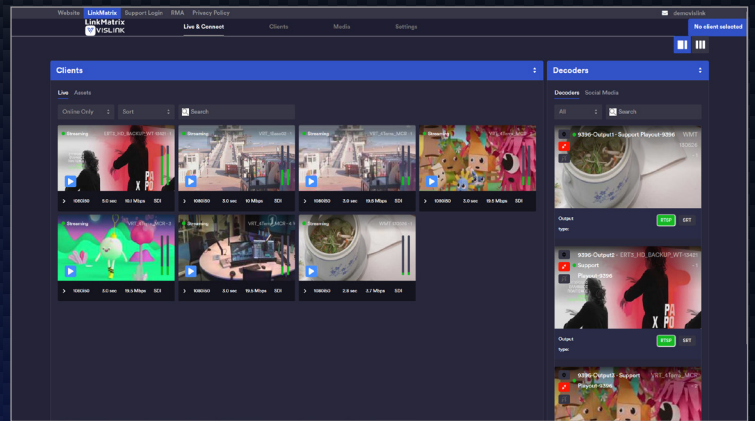


LinkMatrix

Unified All-IP Workflow System

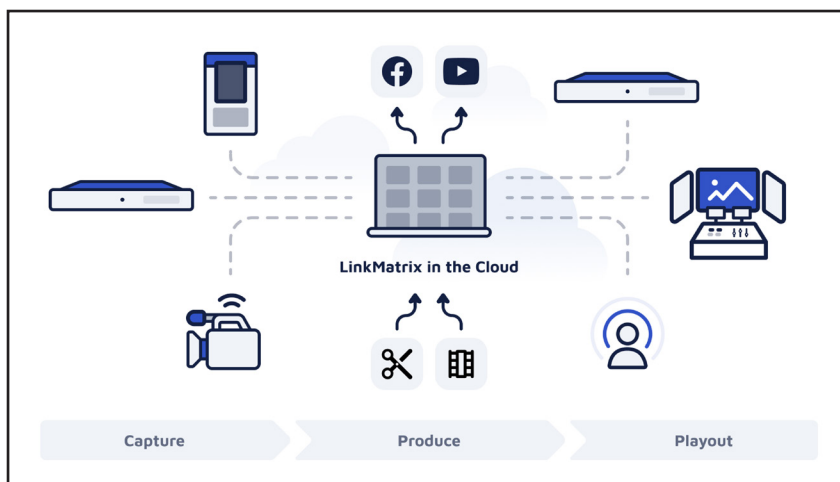


LinkMatrix is a browser-based management platform that allows remote control of Vislink products from any device. Designed for non-technical users, it eliminates the need for direct management in the field.

LinkMatrix offers comprehensive management capabilities for individual encoders, enabling the selection of receivers, monitoring of video proxies, control of live streams, setup of video return, network analysis, and a wide range of configurations and diagnostics. It provides access to detailed operational statistics, including cellular and network connectivity metrics, to facilitate advanced troubleshooting.

Additionally, LinkMatrix supports the selection of decoder destinations and live stream output management. The platform also enables subscription-based cloud decoding with transcoding to multiple video formats, ensuring seamless streaming to social media platforms, CDNs, OTT services, and other IP-based distribution networks.

Quantum Receiver Integration: LinkMatrix integrates Vislink's Quantum Receiver, combining COFDM wireless and bonded cellular/5G camera systems into one managed solution. This enables efficient content capture for live event production, supports REMI workflows, and allows wireless camera feeds to be streamed directly to YouTube and social media, with remote control of Quantum functions.



Key Features

Allows remote operation of Vislink encoders, decoders and IQ Sports Producer

Hosted cloud service

Operates under most browsers

Manage, configure, operate, monitor and troubleshoot

Intuitive and easy-to-use GUI

Operate live streams from anywhere in the world

REMI features including Tally, PreSonus and RCP control

Full network management including cellular, wi-fi, satellite & LAN

(complete feature list on page 2)

Typical Applications

Newsgathering

Live Events

Sporting Events

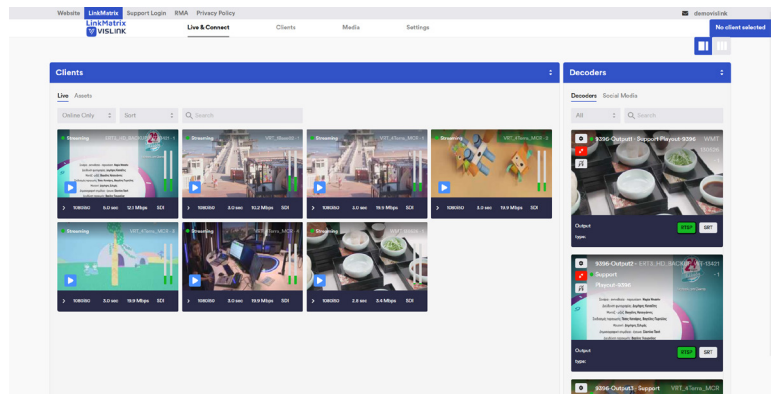
Remote Production

Complete Feature List

- Free hosted service
- Secure sign-on with defined user privileges
- Use on any browser supported device from any remote location
- Manage and control all encoders and receivers
- Manage and control IQ Sports Producer
- Universal playout of 3rd party encoders
- View thumbnails of live streams with video formats/frame rates
- Connect live streams to a live stream destination (decoder or online destination)
- Manage decoder hardware
- Create social media streams
- Configure, operate & troubleshoot
- View and control cellular and fixed networks
- Cloud decoding for IP workflows
- Control Transcoding functions
- Control IFB & Video Return
- Create graphical overlays
- Edit live streams into clips (Clipper Studio)
- Remote video switching
- REMI - Remote tally/RCP
- Scheduling live events
- Stat generation and live gauges

Live & Connect

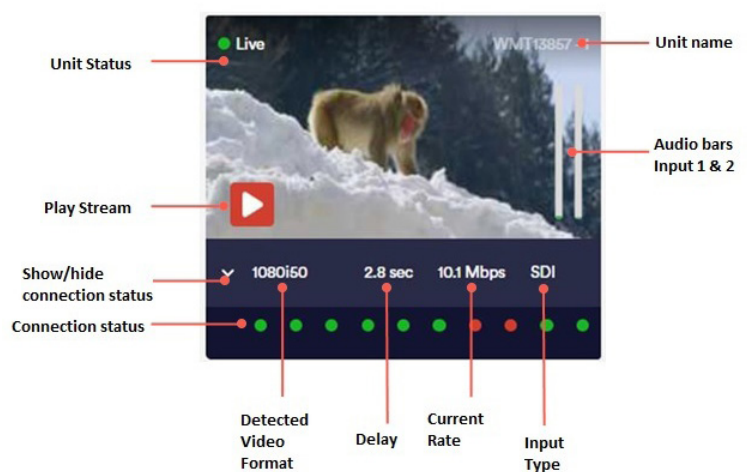
The Live & Connect page of LinkMatrix is where all video streams can be connected, controlled and monitored. The left side of the screen shows all the different streams available in an account. The right side of the screen contains all output destinations where a simple drag and drop connects encoders with their appropriate decoder.



Universal Playout

LinkMatrix has a Universal Playout function which supports numerous video sources. This includes third party streams and competitive offerings that can be added and connected to the decoder outputs, or pushed to the integrated social media streaming feature.

The Universal Playout feature supports third party streams of RTMP (H.264), RTSP (H.264 & H.265), TSMEPEG4, and HLS. Third-party streams are called StreamSources in LinkMatrix.



LinkMatrix facilitates the remote control of Vislink encoders by emulating the touchscreen graphical user interface within a browser. This allows all device configurations and operations, including initiating live broadcasts, to be performed remotely. On-site personnel, such as camera operators, presenters, and journalists, do not require technical expertise to use the encoder, as all functions can be managed in real time from a remote location.

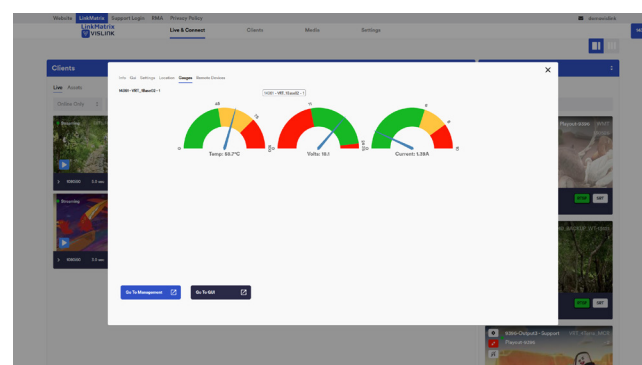
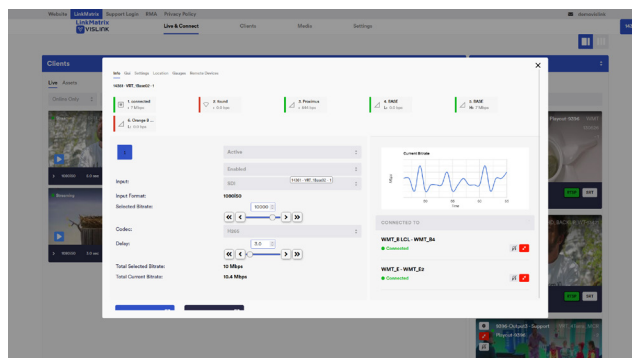
Management & Monitoring

LinkMatrix has a host of configuration and operational statistics for viewing and troubleshooting, including cellular and network connectivity.

LinkMatrix enables the selection of decoder destinations and the specification of the physical output on the decoder device for live streaming.

LinkMatrix also supports subscription-based full cloud decoding, can transcode to a variety of different video formats and stream to a different range of social media, CDN, OTT or other IP video platforms.

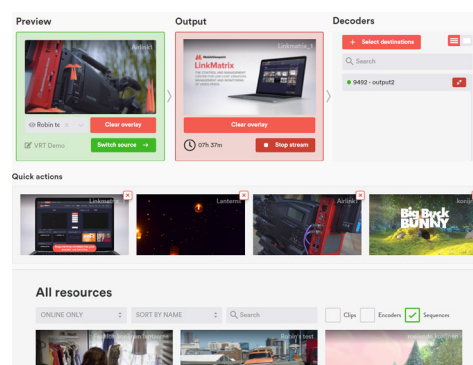
The Gauges tab show gauges detailing physical properties, including detected temperature, voltage and current of the unit.



Other Management & Production Solutions within LinkMatrix

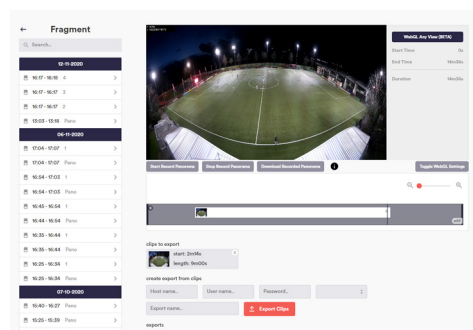
LinkMix

LinkMix is a real-time playout and switching solution for use with the LinkMatrix video control and management center. It simplifies the ability to create complete IPTV channels featuring playlists, overlays, live switches and ticker tapes. These channels can then be published on platforms such as Vimeo and Facebook.



Clipper Studio

Clipper is a web-based live TV clipping application. With Clipper, content teams can select key moments as they occur from a live stream, edit and post them within 30 seconds on Social Media platforms or a private CDN.



Other Management & Production Solutions within LinkMatrix

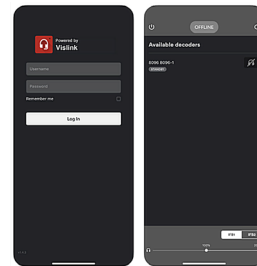
LinkSwitch

LinkSwitch is the stand-alone debonding server offering transcoding and relay services. LinkSwitch is required when customers want to operate at a larger scale or do not require for SDI decoding. LinkSwitch is a highly scalable solution that provides a flexible range of options available in a customizable, modular framework.



IFB App

The IFB App is the ultimate companion app for Vislink decoder users. It allows entire crews to use their iOS device to listen in to the same IFB stream coming from the studio. By eliminating the need for audio splitters and cumbersome cables, everyone can use their own device and choose which stream they want to listen to.



IFB App features include:

- Calendar for scheduling games
- Creation of highlights and replays
- Storyboard for intro's and outro's
- Graphical overlays
- Add sponsors and banners to matches
- Scoreboard (manual and OCR)
- Multiple view setup for multi-camera