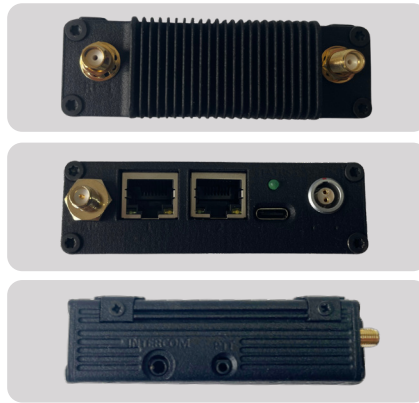
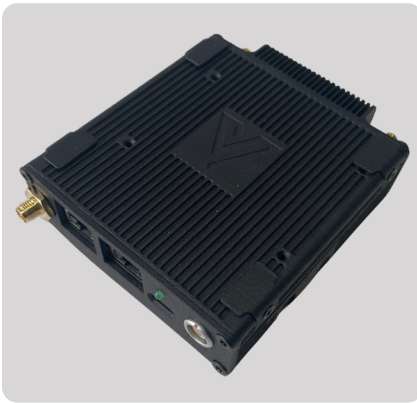


# MeshConnect

## Rugged IP Networking Node



The MeshConnect redefines connectivity for modern storytelling, and is your ultimate solution for on-the-go connectivity. Engineered as a rugged, IP networking node, it creates a self-forming, self-healing Mobile Ad-hoc Network (MANET) that keeps your production moving, no matter where the action takes you.

Designed for live events, sports, reality, film, and entertainment, MeshConnect delivers reliably in even the toughest conditions. Its durable design and intuitive management tools make deployment effortless, so your team can focus on capturing the moment, not configuring technology.

With dual-band operation and a powerful Web-based GUI for seamless control and monitoring, MeshConnect brings IP control to your broadcast workflow, empowering you to connect, create, and share on the move.

### Key Features

Frequency Range: 1.35–1.44 GHz or 2.20–2.50 GHz, with dual-band capability

Data Rate: Up to 100 Mbps (adaptive)

Latency: Average of 7ms

Networking: Supports self-forming and self-healing MANET capabilities for up to 500+ nodes in a single mesh network

Control: A Web-based GUI is available for control

Connectivity: Multiple bridged Ethernet ports

Boot Time: Under 60 seconds from cold start to a network-ready state

Security: AES 256 encryption available

### Typical Applications

Live events, sports and entertainment broadcasts

# MeshConnect Datasheet



Technical Specifications	
RF and Networking	
Frequency	<ul style="list-style-type: none"><li>• 1.35–1.44 GHz</li><li>• 2.2 – 2.2 GHz</li><li>• Dual 1.35-1.44GHz &amp; 2.2-2.5GHz</li></ul>
Output Power	2 × 1mW to 2W
Rx Sensitivity	<-105 dBm at 1.25 MHz bandwidth
Channel Bandwidth	1.25 MHz, 2.5 MHz, 5 MHz, 10 MHz, 20 MHz
Carrier Modulation	BPSK, QPSK, 16QAM, 64QAM, 128QAM, 256QAM (Adaptive)
Throughput	Up to 100Mbps
Maximum Nodes	Supports up to 500+ nodes in a single mesh
Wi-Fi	Features a 2/5 GHz Wi-Fi Access Point (AP/Client) that can be enabled or disabled, with configurable SSID and password
Intercom	
Intercom	Compatible with standard TRRS headsets
PTT	Push-to-Talk Trigger
Power	
Input Voltage	9-32V DC
Power Consumption	13W Max
Connectors	<ul style="list-style-type: none"><li>• 2 x SMA Female for RF</li><li>• 2 x RJ45 (1 × 10/100/1000 Mbps, 1 × 10/100Mbps)</li><li>• 1 x DC IN Lemo</li><li>• 1 × 4 pole 3.5mm Jack (Intercom)</li><li>• 1 × 3 pole 2.5mm Jack (PTT/Tally)</li><li>• 1 x USB C</li><li>• 1 x RP SMA Female (WiFi AP/Client)</li><li>• Link &amp; Activity LED</li></ul>
User Interface	<ul style="list-style-type: none"><li>• Web GUI</li><li>• LED indication</li></ul>
Compliance	FCC, CE, IC, and RoHS compliance
Physical and Environmental	
Dimensions	Approximately 82 mm (W) x 95.6 mm (D) x 25 mm (H) (excluding connectors)
Weight	212 grams (approximate)
Operating Temperature	-20°C to +50°C
Storage Temperature	-40°C to +80°C
Ingress Protection	Rated IP54
Humidity	0-95% non-condensing

E: [sales@vislink.com](mailto:sales@vislink.com) T: +1 908 852 3700 / + 44 1442 431300 [www.vislink.com](http://www.vislink.com)

© Copyright 2025 Vislink Technologies, Inc. All rights reserved. All other products or services referenced herein are identified by the trademarks or service marks of their respective companies or organizations. We reserve the right to change specifications without notice. Where applicable, versions of this device may not have been approved by the Federal Communications Commission (FCC). Where applicable, these versions are not offered for sale or lease until approval of the FCC has been obtained.